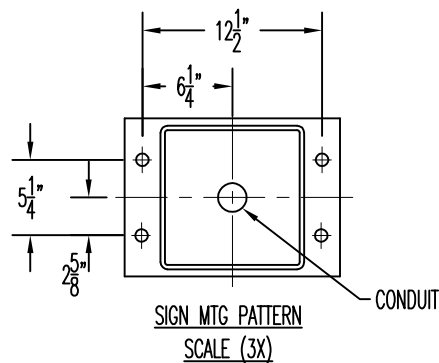


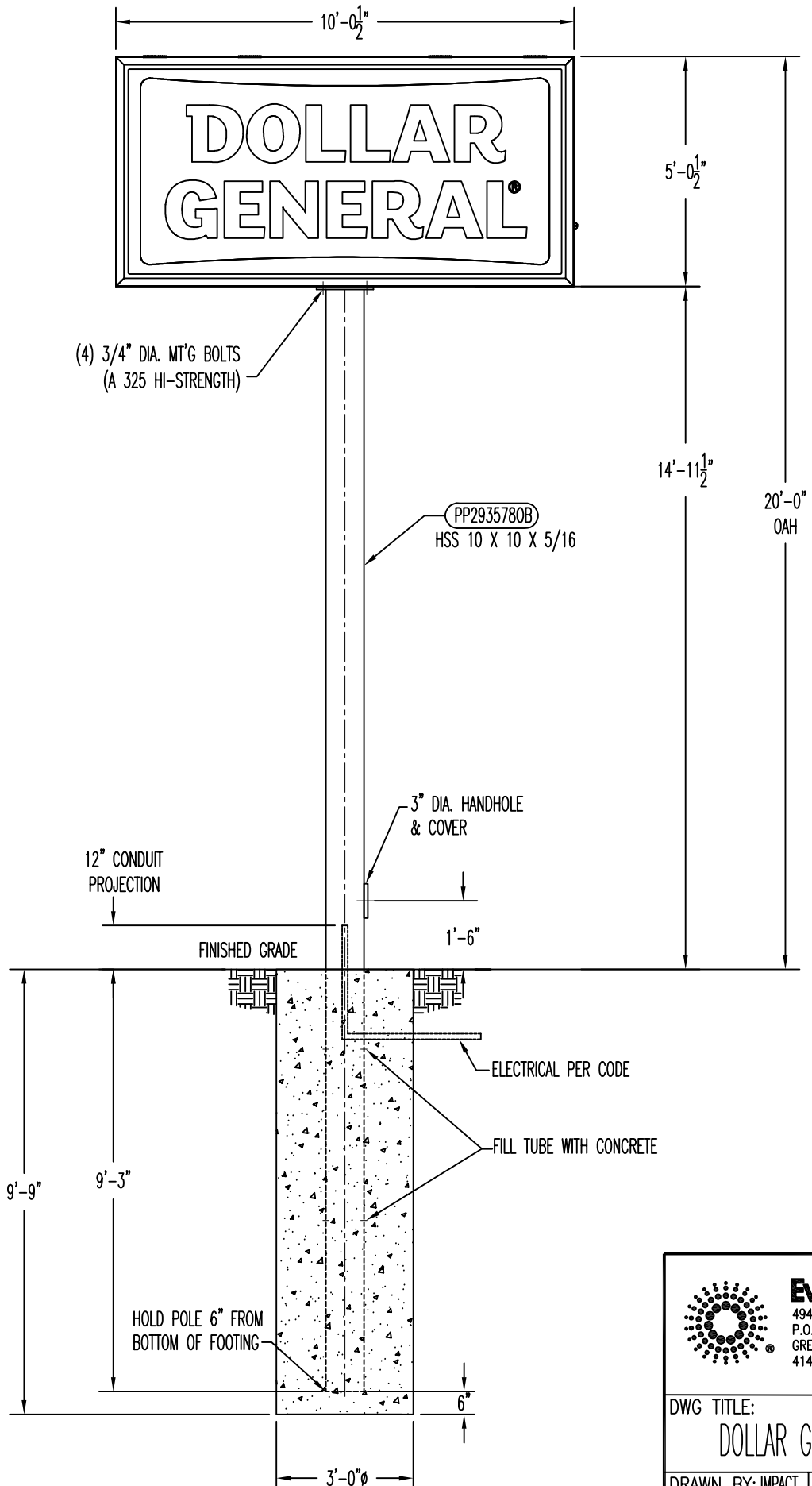
SIGN INFORMATION:
 ELECTRICAL DATA:
 LAMPS: (12) F48T12 CW/HO FLUORESCENT BALLAST: (2)
 EESB-832-16L

CURRENT DRAW: 4.8 AMPS @ 120 VOLTS
 60 HZ , (1) 20 AMP CIRCUIT
 LUMENS: 51,600 TOTAL
 LUMENS PER SQ FT: 1212



INSTALLATION INSTRUCTIONS:

1. STAKE FOUNDATION AREA AND CONFIRM FINAL GRADE REQUIREMENTS WITH G.C.
2. EXCAVATE FOUNDATION AREA.
3. SET COLUMN PLUMB, INSTALL CONDUIT STUB AND POUR CONCRETE. (PRIMARY ELECTRICAL SERVICE TO BASE BY G.C.)
4. ALLOW CONCRETE CURE TIME AS REQUIRED.
5. MOUNT I.D. SIGN ON POLE (INSTALLER TO PROVIDE WIRE BETWEEN SIGN AND BASE OF POLE.
6. MAKE FINAL ELECTRICAL HOOK UP TO PRIMARY (ALL ELECTRICAL TO MEET LOCAL CODES.)
7. NOTE: INSTALLER IS REQUIRED TO PAINT THE POLE, COMPLETE, UPON ERECTION OF I.D. SIGN OR AS SOON AS WEATHER PERMITS.
8. TEST LIGHT SIGN AND TOUCH UP SIGN DRUM AS NEEDED.
9. REMOVE LIFTING BRACKET AND REINSTALL BOLT.
10. CLEAN UP AREA AND REMOVE ANY PACKING MAT'L.



INSTALLER TO FURNISH:

1. CONCRETE BASE
2. ALL ELECTRICAL COMPONENTS REQUIRED.
3. INSTALLER TO BE SURE SIGNS ARE PROPERLY INSTALLED, CONNECTED AND GROUNDED.

EVERBRITE TO FURNISH:

1. 5'-0 1/2" X 10'-0 1/2" SIGN
2. MOUNTING POLE
3. TOUCH UP PAINT

CONCRETE SPECIFICATION:

2.55 CU. YDS. TOTAL. CONCRETE SHALL HAVE MIN. COMPRESSIVE STRENGTH OF 3,000 PSI @ 28 DAYS, REINFORCING STEEL SHALL HAVE MIN. YIELD STRENGTH OF 60,000 PSI. RECOMMENDED MIN. CURE TIME OF 7 DAYS BEFORE SIGN INSTALLATION


DESIGN NOTE:

SIGN, POLE AND CONCRETE FOUNDATION ARE DESIGNED TO WITHSTAND A WIND LOAD OF 69 P.S.F. CONCRETE FOUNDATION DESIGNED USING A LATERAL SOIL BEARING PRESSURE OF 300 PSF/FT OF DEPTH. IF THESE SOIL CONDITIONS DO NOT EXIST AT THE FOUNDATION LOCATION IT IS THE ERECTOR'S RESPONSIBILITY TO NOTIFY EVERBRITE, LLC. PRIOR TO ADDITIONAL EXCAVATION OR ANY CONCRETE PLACEMENT

GENERAL NOTE:

INCLUDE COMPLETION PHOTOS OF MOUNTING / CONNECTION POINTS INCLUDING FOUNDATION, BASE PLATES, ANCHOR BOLTS, MATCH PLATE, WALL MOUNT, WELDING CONNECTIONS AND GROUT INSTALLATION IF APPLICABLE.

THIS SIGN IS INTENDED TO BE INSTALLED IN ACCORDANCE WITH THE REQUIREMENTS OF ARTICLE 600 OF THE NATIONAL ELECTRIC CODE AND/OR OTHER APPLICABLE LOCAL CODES. THIS INCLUDES PROPER GROUNDING AND BONDING OF THE SIGN.

	Everbrite 4949 SO. 110TH ST. P.O. BOX 20020 GREENFIELD, WI 53220 414-529-3500	THESE DRAWINGS ARE THE EXCLUSIVE PROPERTY OF EVERBRITE, LLC. USE OF, OR DUPLICATION IN ANY MANNER WITHOUT EXPRESS WRITTEN PERMISSION OF EVERBRITE, INC. IS PROHIBITED.
DWG TITLE: DOLLAR GENERAL 5'-0 1/2" X 10'-0 1/2" SIGN @ 20'-0" OAH		14'-11 1/2" EXPOSED POLE 24'-2 1/2" TOTAL POLE LENGTH
DRAWN BY: IMPACT TDT CHK'D BY: RHB	DATE: 09-16-13 DATE: 09-17-13	SCALE: 1:24 DWG NO.: IN03948B REV.: A

POLE WEIGHT = 1019 LBS.

REVISIONS	REV.	DESCRIPTION	DATE	BY	ECN
	A	RELEASED TO INSTALL	09-17-13	RHB	-