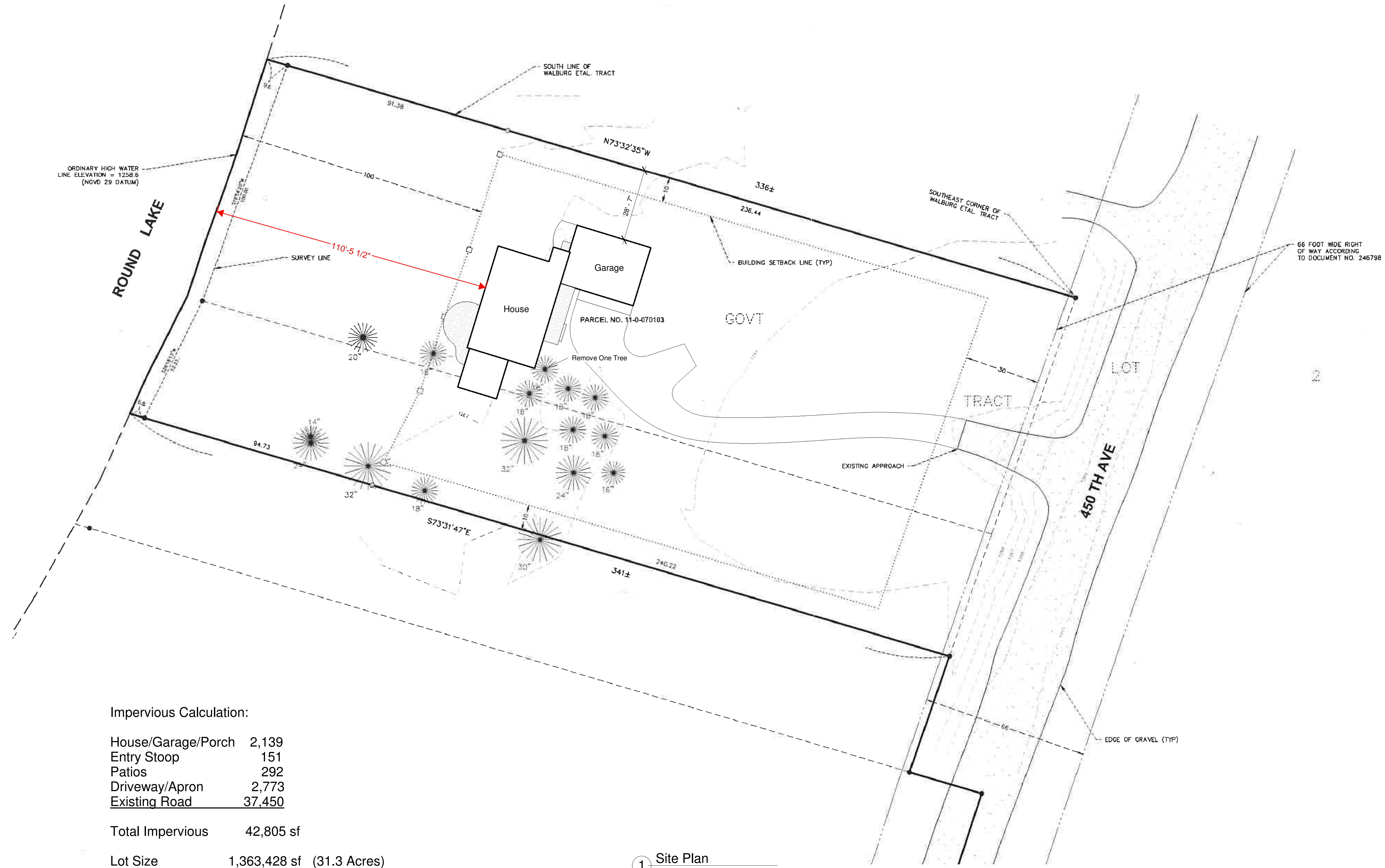




Kirkhoff Lake Home
 ~Round Lake, Aitkin County~

Site Plan	
Project Status	
Date	October 11, 2022
Drawn by	mcjohnson
S1	
Scale	1" = 20'-0"



Impervious Calculation:

House/Garage/Porch	2,139
Entry Stoop	151
Patios	292
Driveway/Apron	2,773
Existing Road	37,450

Total Impervious 42,805 sf

Lot Size 1,363,428 sf (31.3 Acres)

Percent Impervious 3.14 %

1 Site Plan
 1" = 20'-0"