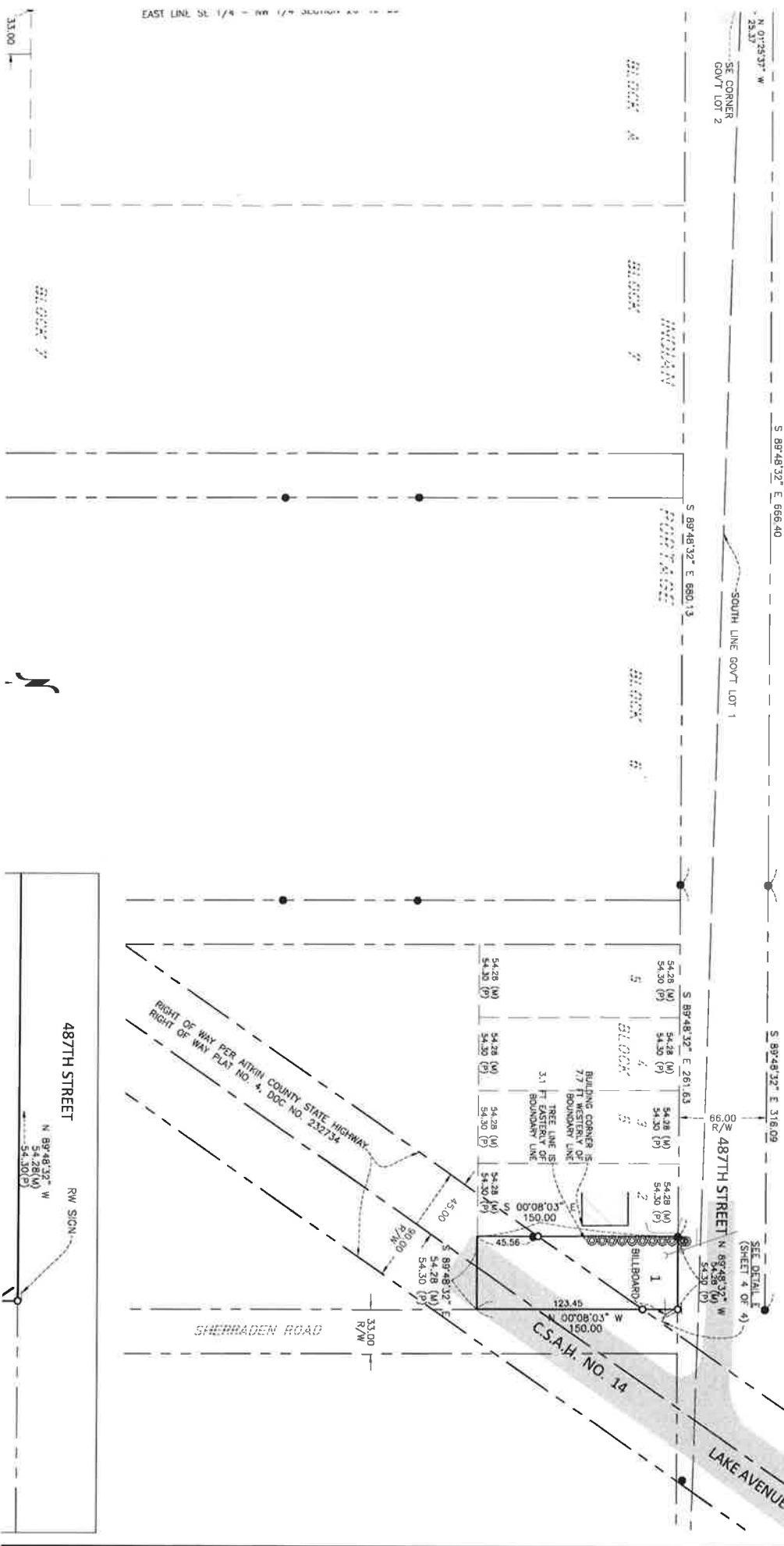


BIG SANDY RESORT AND LODGE MCGREGOR, MINNESOTA

GOVT LOT 1



487TH STREET

N 89°48'32" W
54.30 (P)
54.30 (P)

R/W SIGN

SHERBADEN ROAD

13.00
R/W

C.S.A.H. NO. 14

LAKE AVENUE

SEE DETAIL E
(SHEET 4 OF 4)

90' ±
487TH STREET

N 89°48'32" W
54.30 (P)
54.30 (P)

BILLBOARD

123.45
150.00

N 00°08'03" W

45.56

150.00

S 89°48'32" E

54.30 (P)
54.30 (P)

54.30 (P)
54.30 (P)

54.30 (P)
54.30 (P)

54.30 (P)
54.30 (P)

54.30 (P)
54.30 (P)

54.30 (P)
54.30 (P)

54.30 (P)
54.30 (P)

54.30 (P)
54.30 (P)

54.30 (P)
54.30 (P)

54.30 (P)
54.30 (P)

54.30 (P)
54.30 (P)

54.30 (P)
54.30 (P)

54.30 (P)
54.30 (P)

54.30 (P)
54.30 (P)

54.30 (P)
54.30 (P)

54.30 (P)
54.30 (P)

54.30 (P)
54.30 (P)

54.30 (P)
54.30 (P)

54.30 (P)
54.30 (P)

54.30 (P)
54.30 (P)

54.30 (P)
54.30 (P)

54.30 (P)
54.30 (P)

54.30 (P)
54.30 (P)

54.30 (P)
54.30 (P)

54.30 (P)
54.30 (P)

54.30 (P)
54.30 (P)

54.30 (P)
54.30 (P)

54.30 (P)
54.30 (P)

54.30 (P)
54.30 (P)

54.30 (P)
54.30 (P)

54.30 (P)
54.30 (P)

54.30 (P)
54.30 (P)

54.30 (P)
54.30 (P)

54.30 (P)
54.30 (P)

54.30 (P)
54.30 (P)

S 89°48'32" E 686.40

SOUTH LINE GOVT LOT 1

S 89°48'32" E 680.13

PARKING

BLDG #1

BLDG #2

BLDG #3

BLDG #4

BLDG #5

N 01°26'37" W
23.37

SE CORNER
GOVT LOT 2

33.00

BLDG #7



EAST LINE SE 1/4 - W 1/4 SECTION 18 - T12N R10E