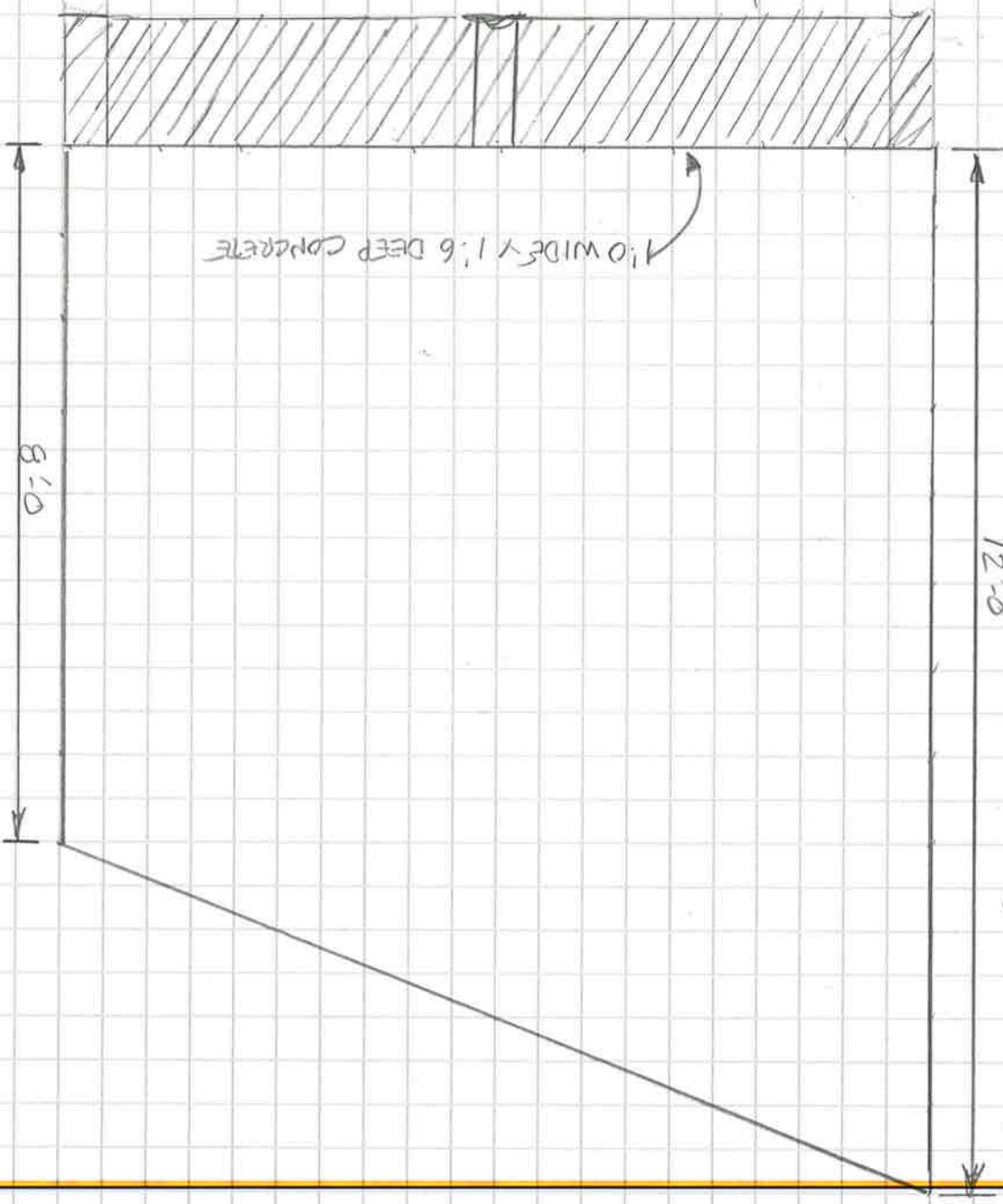
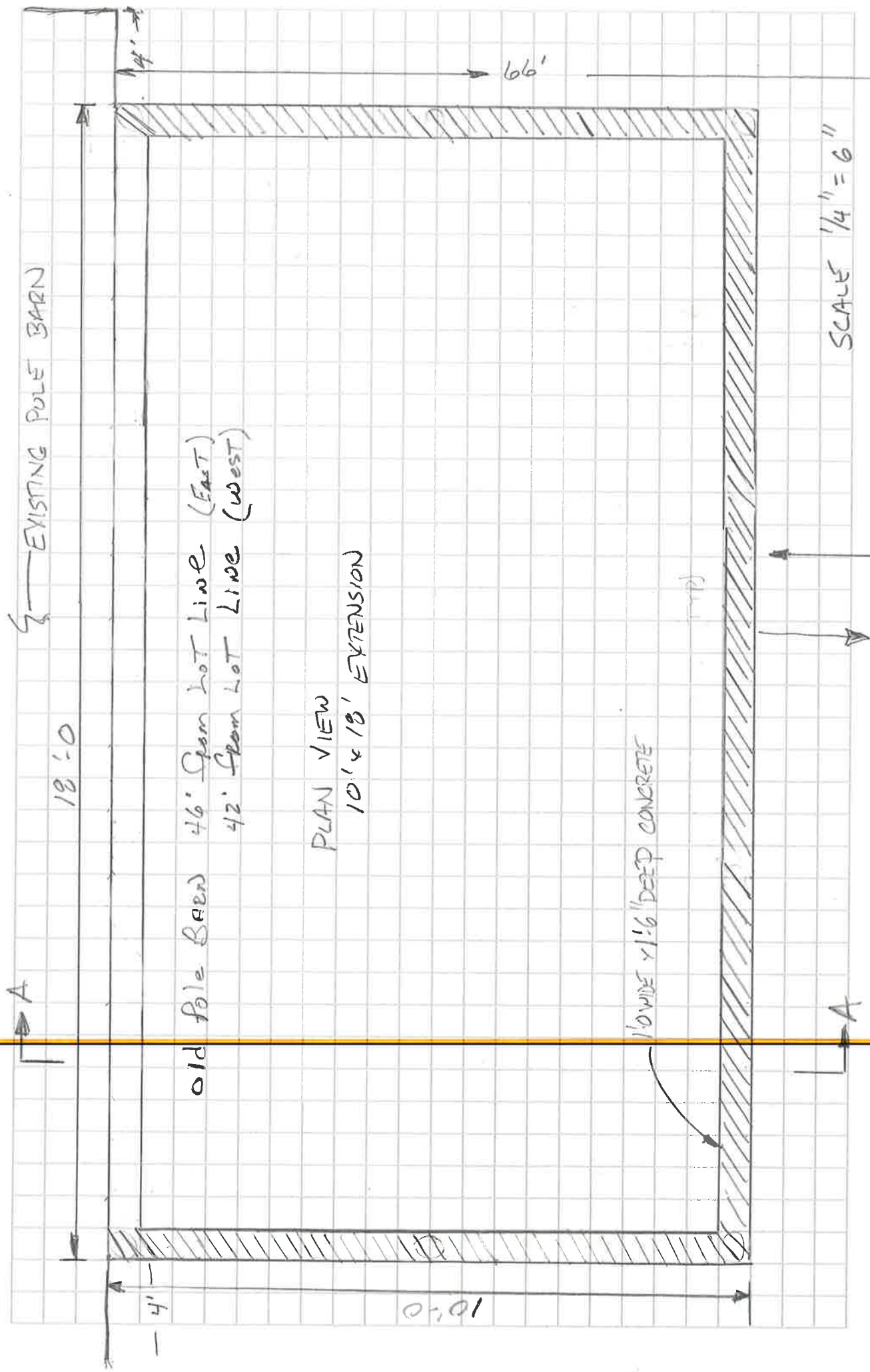


West Central Steel, Inc.
110 19th St NW
PO Box 1178
Willmar MN 56201
Phone 320-235-4070
Toll Free 1-800-992-8853
Fax 320-235-1816

SECTION A-A
SCALE 1/4" = 6"





EXISTING POLE BARN

18'-0"

old pole barn 46' from lot line (East)
42' from lot line (West)

PLAN VIEW
10' x 18' EXTENSION

1' WIDE x 1/6" DEEP CONCRETE

66'

SCALE 1/4" = 6"

56'

NORTH



West Central Steel, Inc.
110 19th St NW
PO Box 1178
Willmar MN 56201
Phone 320-235-4070
Toll Free 1-800-992-8853
Fax 320-235-1816