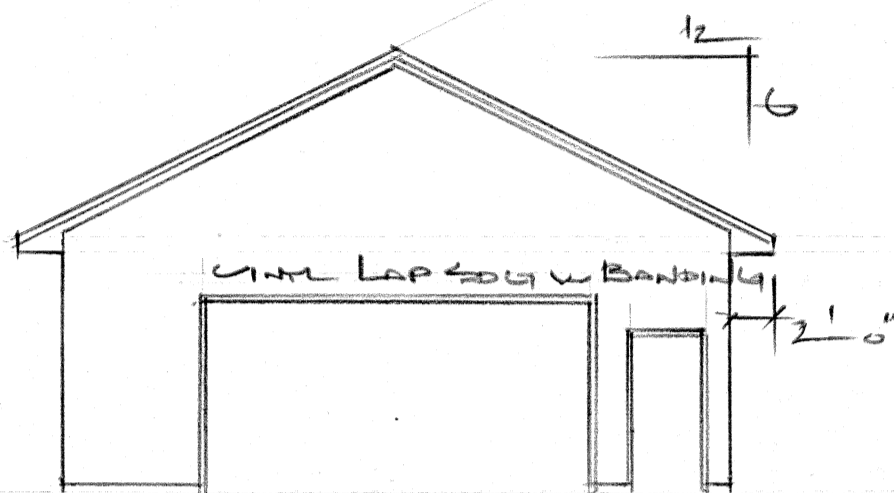
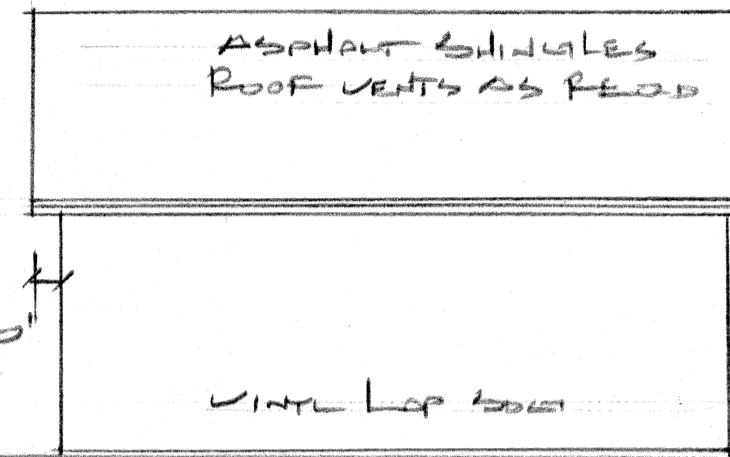


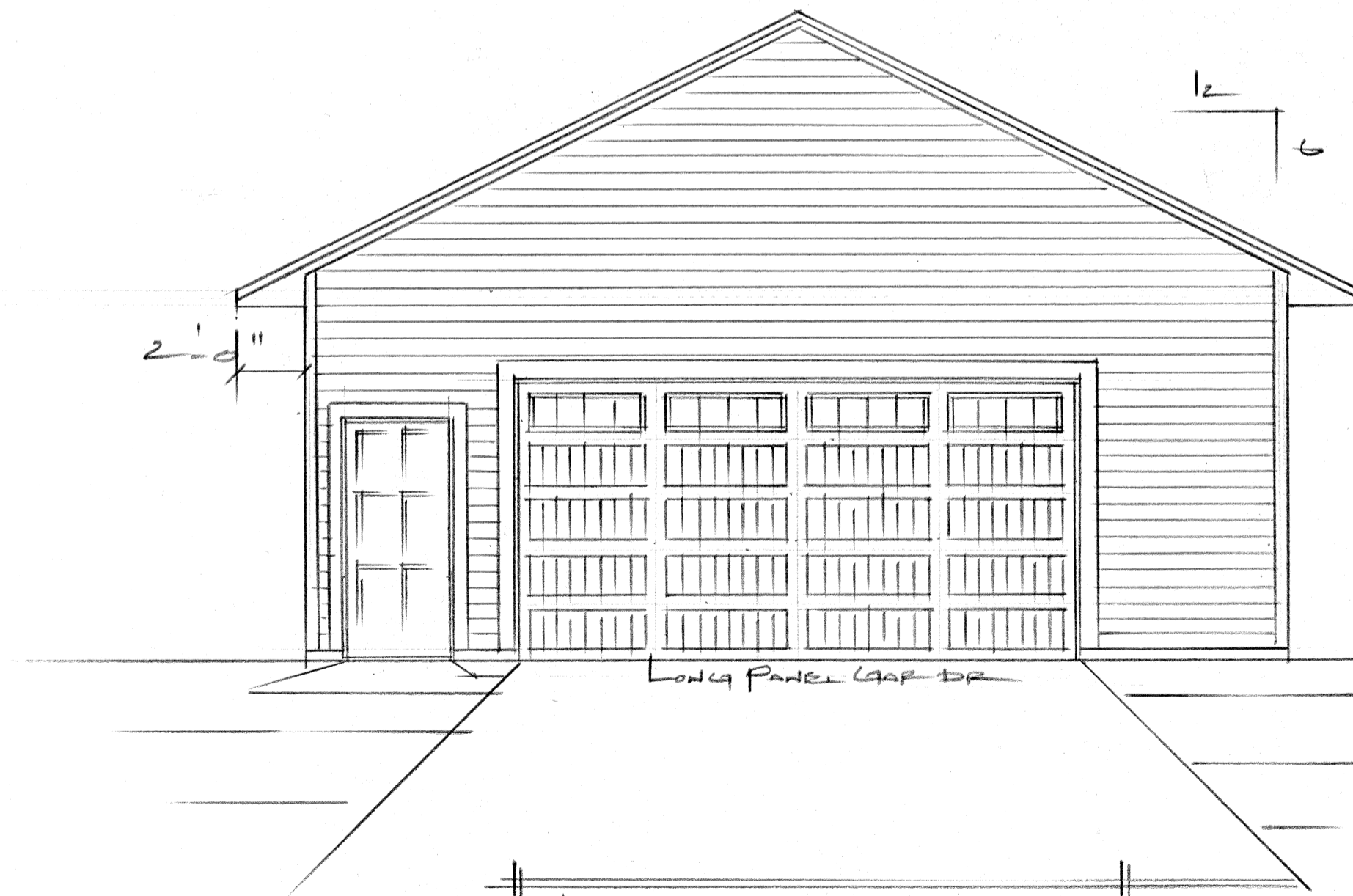
LEFT ELEVATION 1/8"=1'-0"



REAR ELEVATION 1/8"=1'-0"



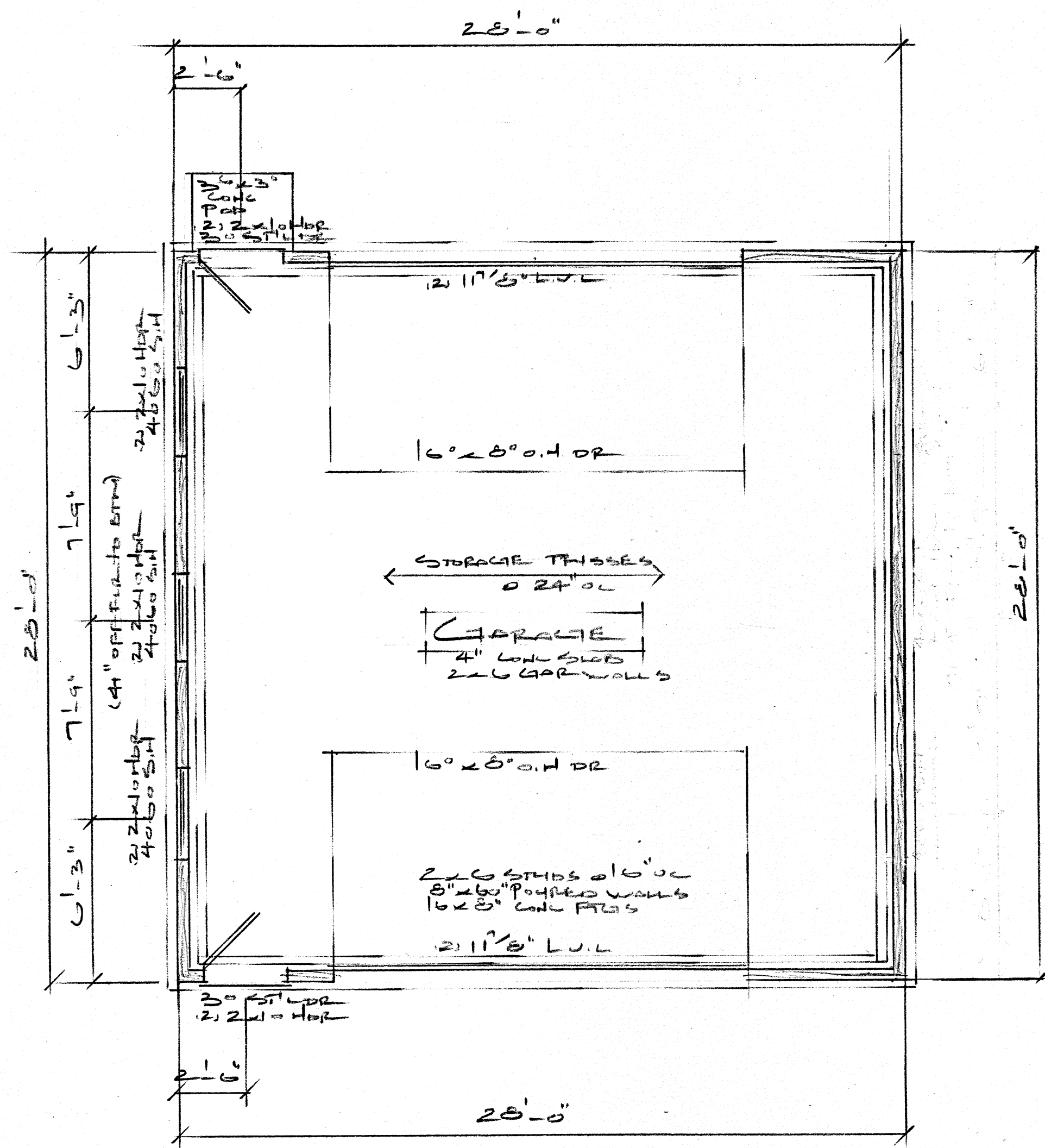
RIGHT ELEVATION 1/8"=1'-0"



FRONT ELEVATION 1/4"=1'-0"

ASPHALT SHINGLES  
ALUMINUM SOFFITS & FASCIA

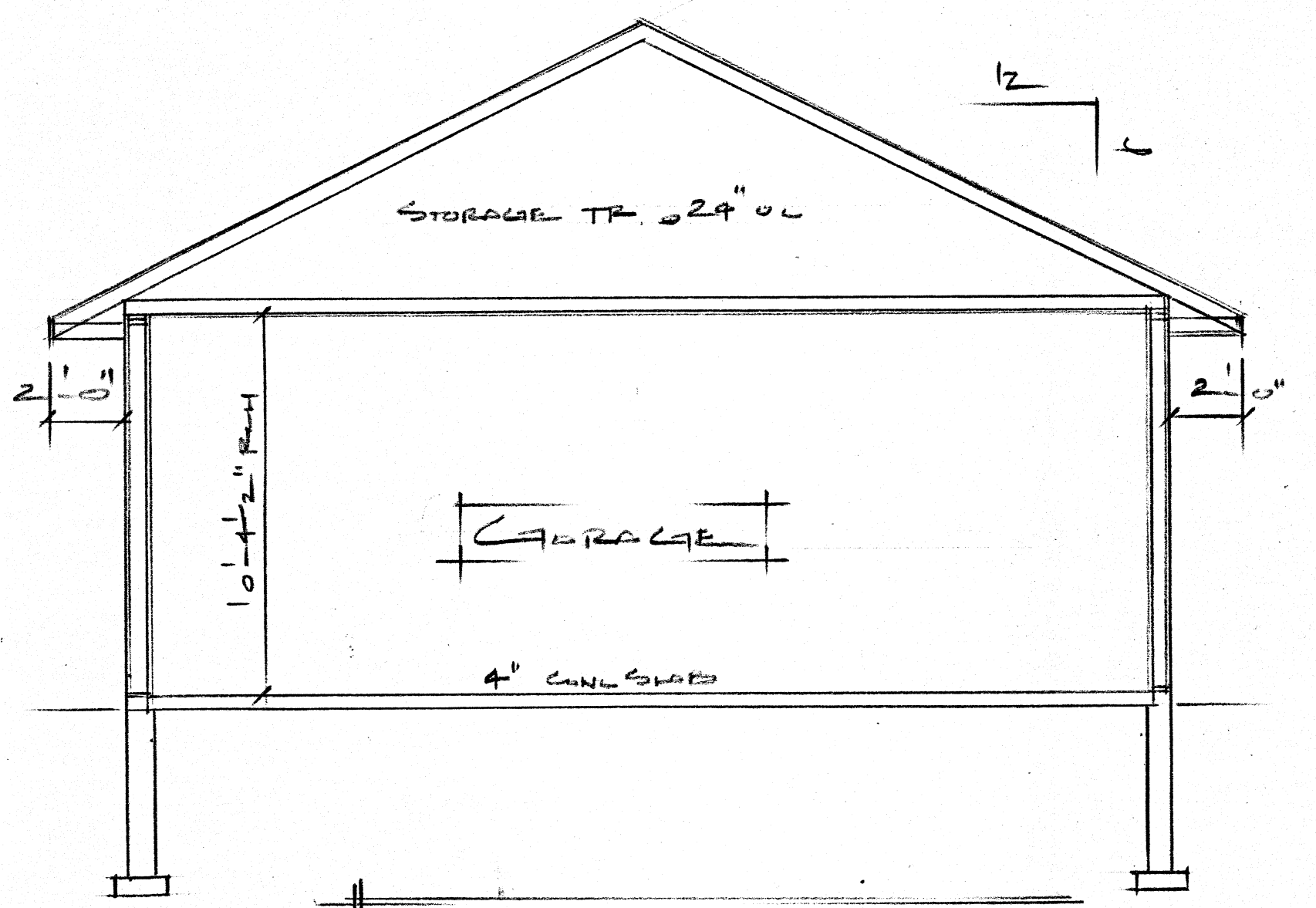
VINYL LAP Siding  
w/ BANDING



GARAGE PLAN 1/4"=1'-0"

**Materials**

- Asphalt Singles-Verify Style
- 15#Felt w/ice & water shield
- 1/4" o.s.b. sheathing w/ clips
- Mfr. design trusses@ 24" o.c.
- R-49.0 Blown ins.
- 1/300 venting-1/2" in soffits
- Air baffles @ each truss space
- Windwash @ each truss space
- 2x6 Subfacia
- Aluminum soffits & Facia
- 5/8" S.R.w/V.B @ Clg.s
- 1/4" S.R.w/V.B @ Ext.Walls
- Omit V.B @ Int walls
- And 5/8 type x sht rock @hse/Gar. common areas
- 2x6 Studs @ 16" O.C
- 5-1/2" Batt insulation-R 21.0
- 7/16 OSB Sheathing
- Exterior House wrap
- All Ftg.s to be 5000-P.S.I Concrete
- Contractor to verify application
- Waterproofing as Req,d
- 4" Concrete Slab
- 6 Mill. Poly V.B. Under Slab
- Drain tile as Req,d



CROSS SECTION 1/4"=1'-0"