



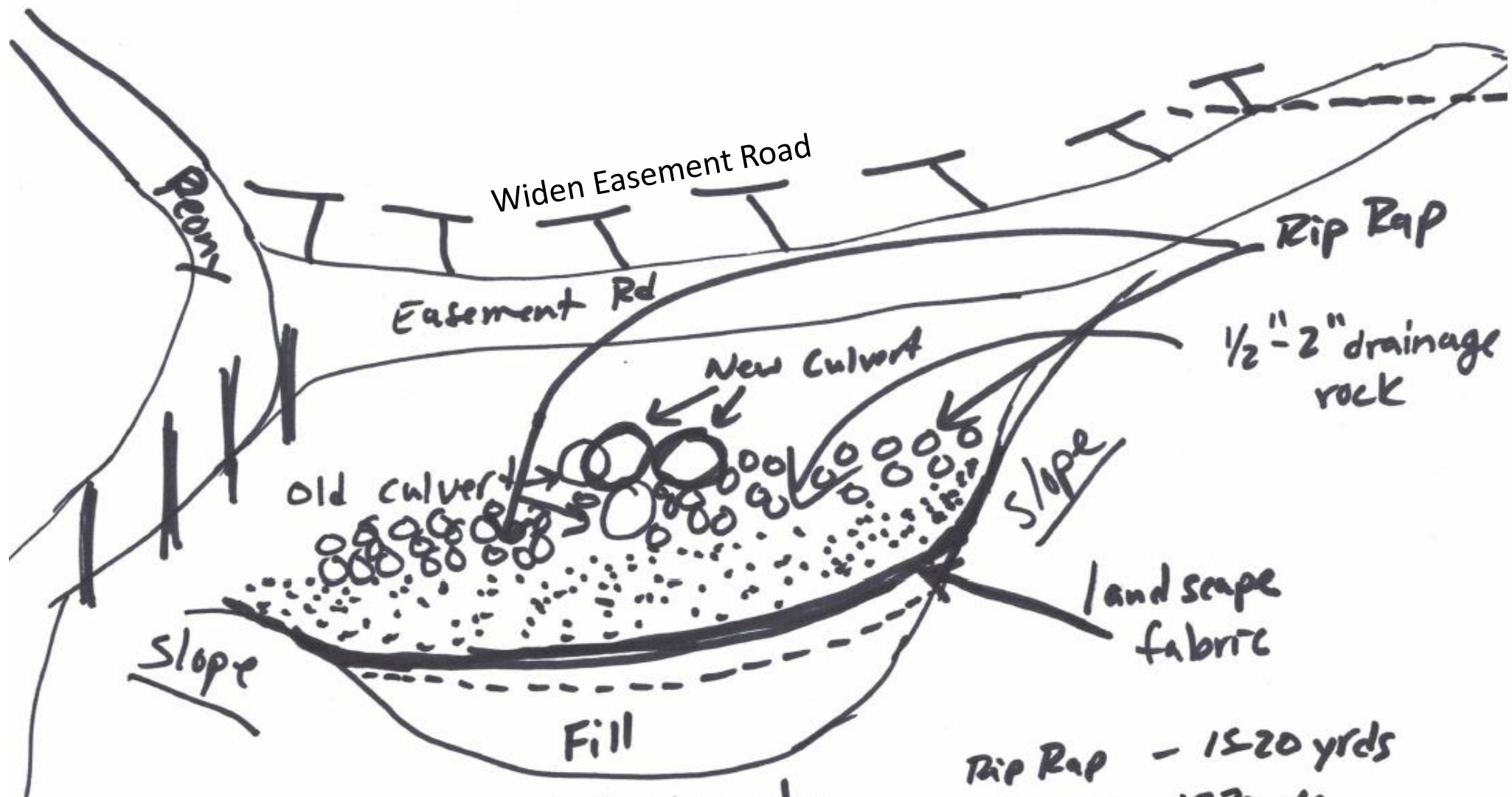
Scrape 10-15 yds off the top of the hill down to this line, fill used in washout area.



Widen the road on this side to allow safer access and keep vehicles away from drainage area.



No intended digging in this area, intent is to leave as is, seed grass and some bushes to solidify hill









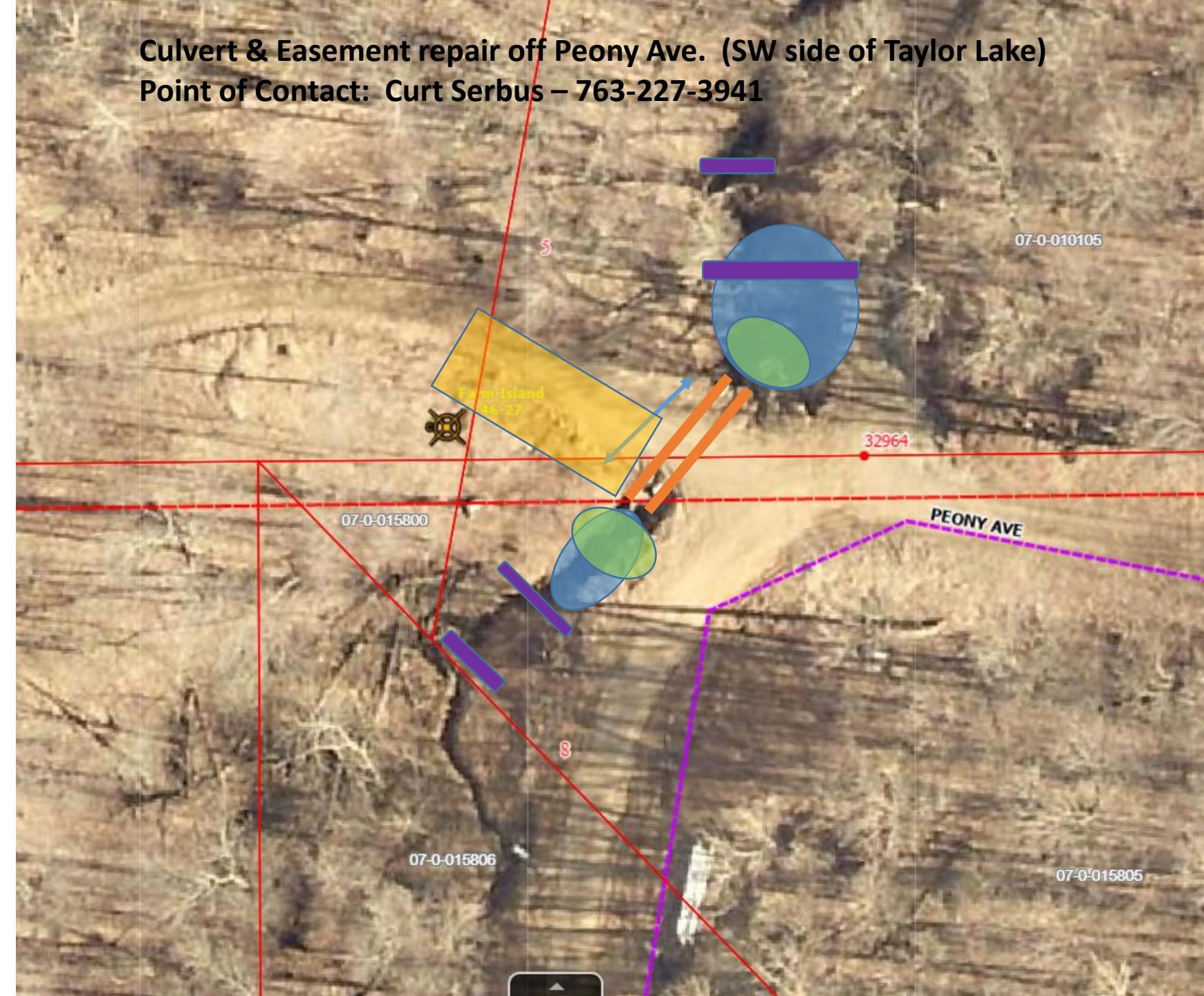
- Rip Rap - 15-20 yds
- Drainage Rock - 15-20 yds
- Fill - 15-20 yds

Culvert & Easement repair off Peony Ave. (SW side of Taylor Lake)

Point of Contact: Curt Serbus – 763-227-3941

Culvert & Easement road repair:

-  Current approach road is 10 ft wide due to Washout and erosion. Widen and rebuild the Approach road to 20 ft wide, to create a safer driveway off & onto Peony from the easement.
-  Replace the old culvert with 2 new ones that are 40-50 ft long, to cover the proper span.
-  This area is a steep hill, scrape away 10-15yds of the hill to lesson the incline onto the easement and use the fill around the culvert. Add Class 5 to easement to firm up the easement road. Seed in any area scraped, that is not part of the easement road.
-  Fill in the washed out area with dirt scraped from the hill, add additional fill if needed, with a drainage swale to allow drainage into culvert. Downhill side of culvert ... fill in the washout area w/ swale, and Seed with grass.
-  Use fabric, 1-2" drainage rock and Rip-rap on top of the fill, to slow & spread water going into and out of the culvert.
-  Use erosion straw roll to slow any possible erosion while the seeded grass takes root.. Straw blankets if needed.



Parcel ID or Address



07-0-010002

07-0-010105

S

Farm Island
46-27

32964

07-0

07-0-015800

PEONY AVE

07-0-015805

07-0-015806

S

07-0-015802



