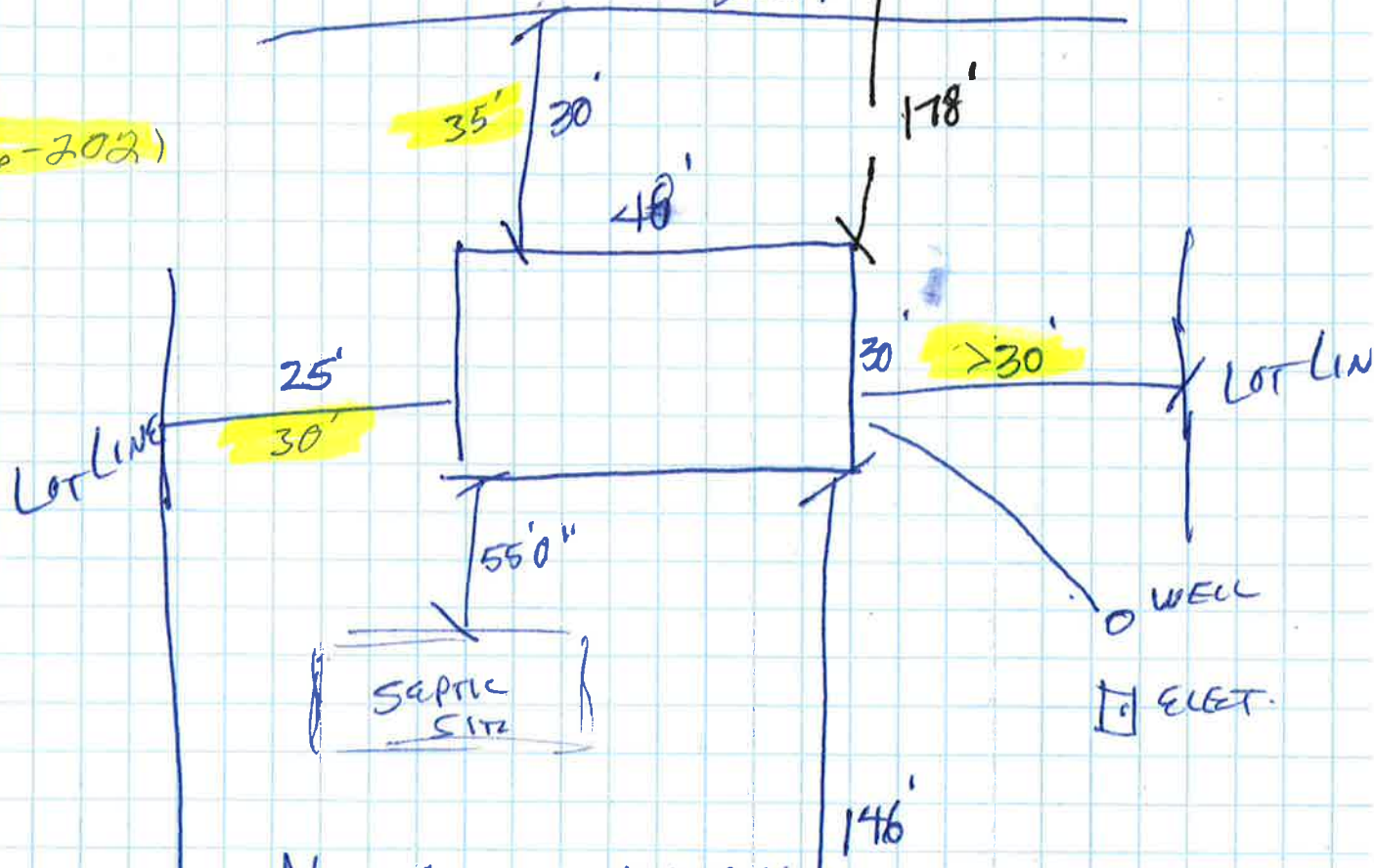


BELLHORN BAY

BLUFF

(K11-16-202)



NO EXCAVATED MATERIAL  
WILL BE USED AS BACKFILL AND EXCESS  
WILL BE REMOVED FROM SITE

NORTH  
↓

NORTHSTAR DESIGN & BUILD INC  
6747 PACIFIC AVE.  
WRIGHT, MN 55798

DON FAIRBANKS JOB  
50655 LAKE AVE.