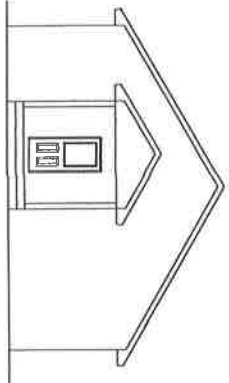
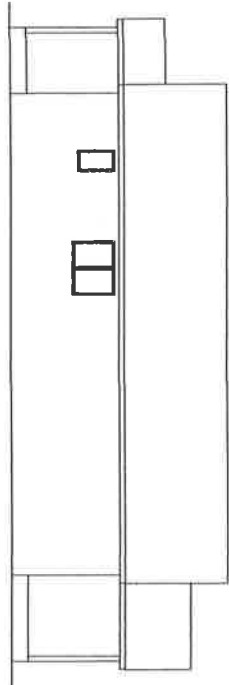


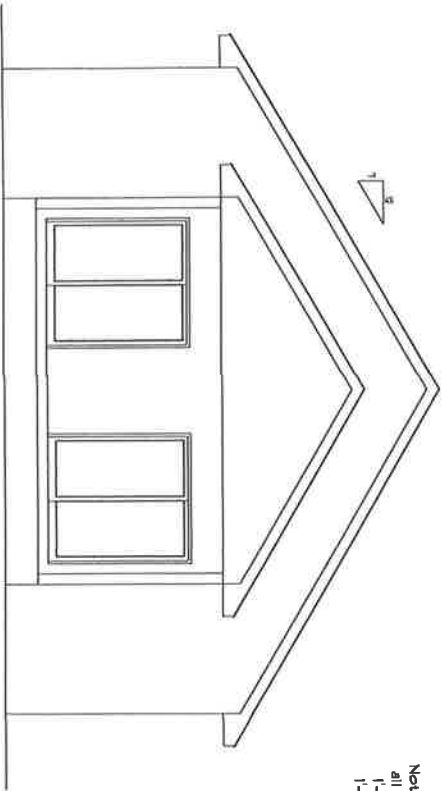
FRONT ELEVATION
Scale: 1/4" = 1'-0"



SIDE ELEVATION
Scale: 1/4" = 1'-0"



BACK ELEVATION
Scale: 1/4" = 1'-0"

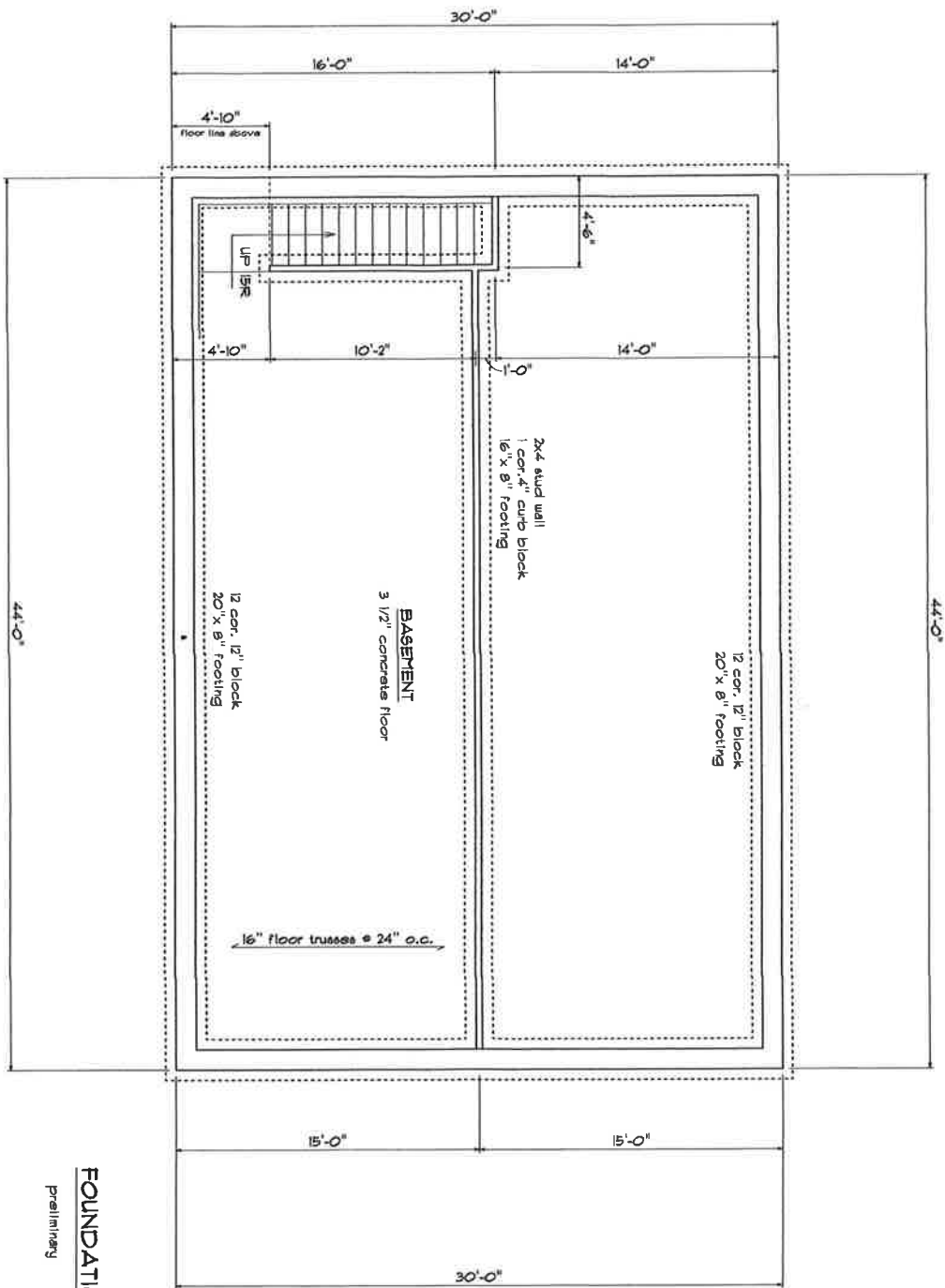


Note:
all roofs 1:12 pitch w/
1'-6" soffits
1'-0" O.H. gable ends

FRONT ELEVATION

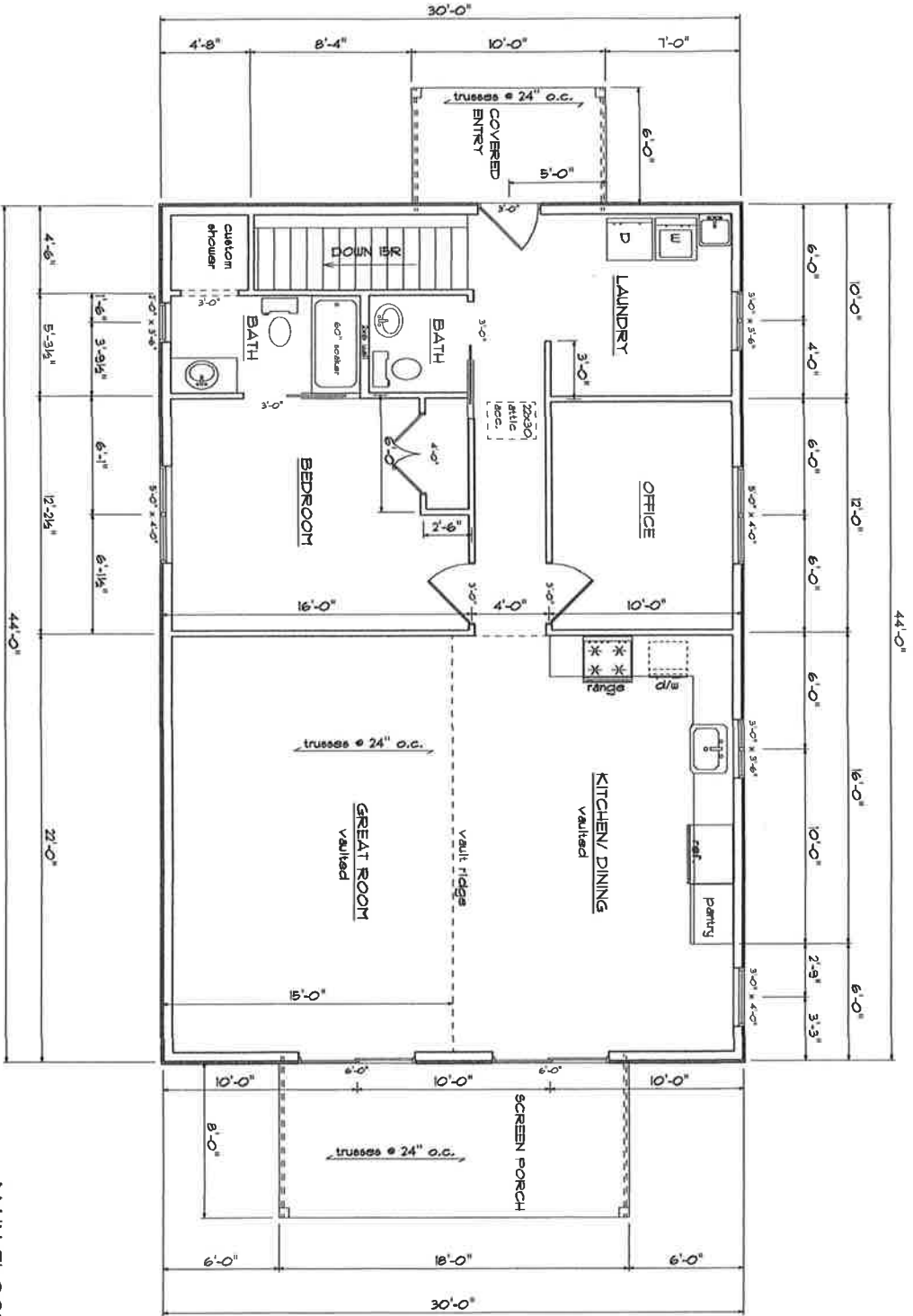
preliminary

scale 1/4" = 1'-0"



FOUNDATION PLAN

preliminary



MAIN FLOOR PLAN

Preliminary

1320 sq.ft.