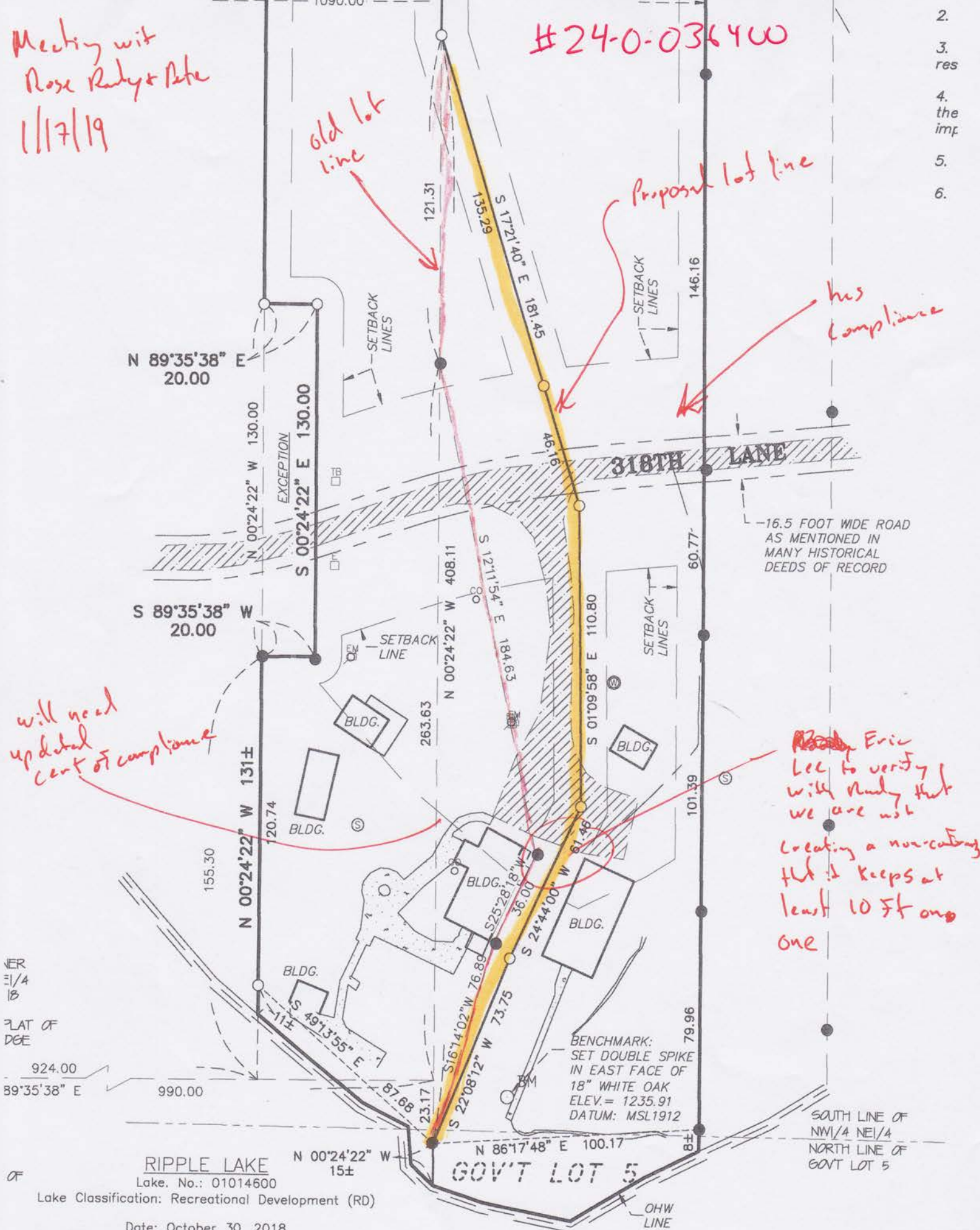


Meeting with  
Rose Rudy & Ate  
11/7/19

#24-0-036400

- 2.
3. res
4. the imp
- 5.
- 6.



will need  
updated  
cert of compliance

Eric  
Lee to verify  
with Rudy that  
we are not  
creating a non-combustible  
that it keeps at  
least 10 ft from  
one

NER  
E1/4  
B  
PLAT OF  
DGE  
924.00  
89°35'38" E  
990.00

**RIPPLE LAKE**  
Lake No.: 01014600  
Lake Classification: Recreational Development (RD)  
Date: October 30, 2018  
Water Elevation = 1228.3 feet (MSL 1912)  
OHV Elevation = 1227.5 feet (MSL 1912)

BENCHMARK:  
SET DOUBLE SPIKE  
IN EAST FACE OF  
18" WHITE OAK  
ELEV. = 1235.91  
DATUM: MSL1912

SOUTH LINE OF  
NW1/4 NE1/4  
NORTH LINE OF  
GOV'T LOT 5