

Deck Plan:

21349 Pike Ave
Aitkin, MN 56431

House



DP-75 Footings with 6x6 Posts



4x4 Rail posts



2x10 Joists

16" Spacing on center SYP #2 Treated Pine

GENOVATIONS PVC DECKING

(5/4) = 1 1/4" x 5 1/2" Deck Boards

90 Degrees off Joists

6x6 Beam Posts SYP #2 Treated Pine

1' Cantilever over Joists

Lateral Load Connectors:

Simpson DTT1Z

Beam Post Plate:

Simpson LCE4 with J-Bolt
to concrete

Post Caps:

Simpson AB Series

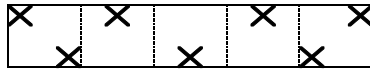


(2) 2x8 Beam
7" Carriage Bolts

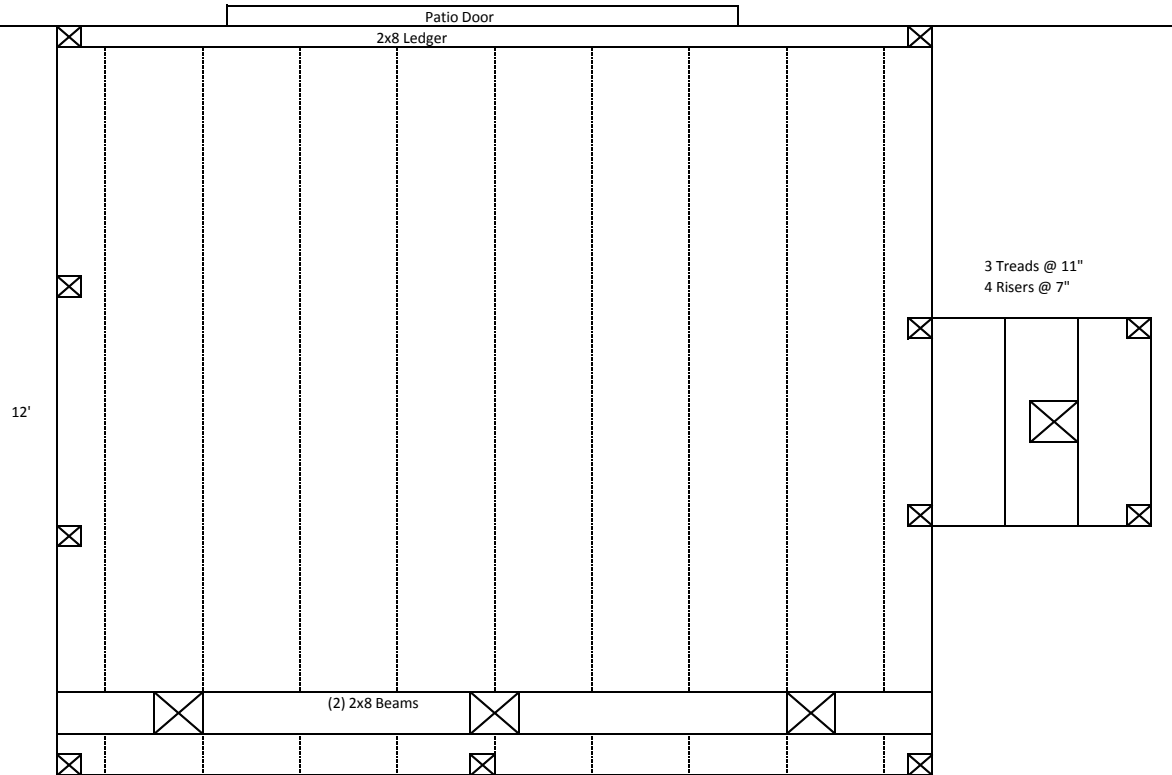
6x6
Beam Post

CHAMFER NOTCH

DECK ELEVATION 24"



5" Lag Bolts with Ledger Pattern



12'