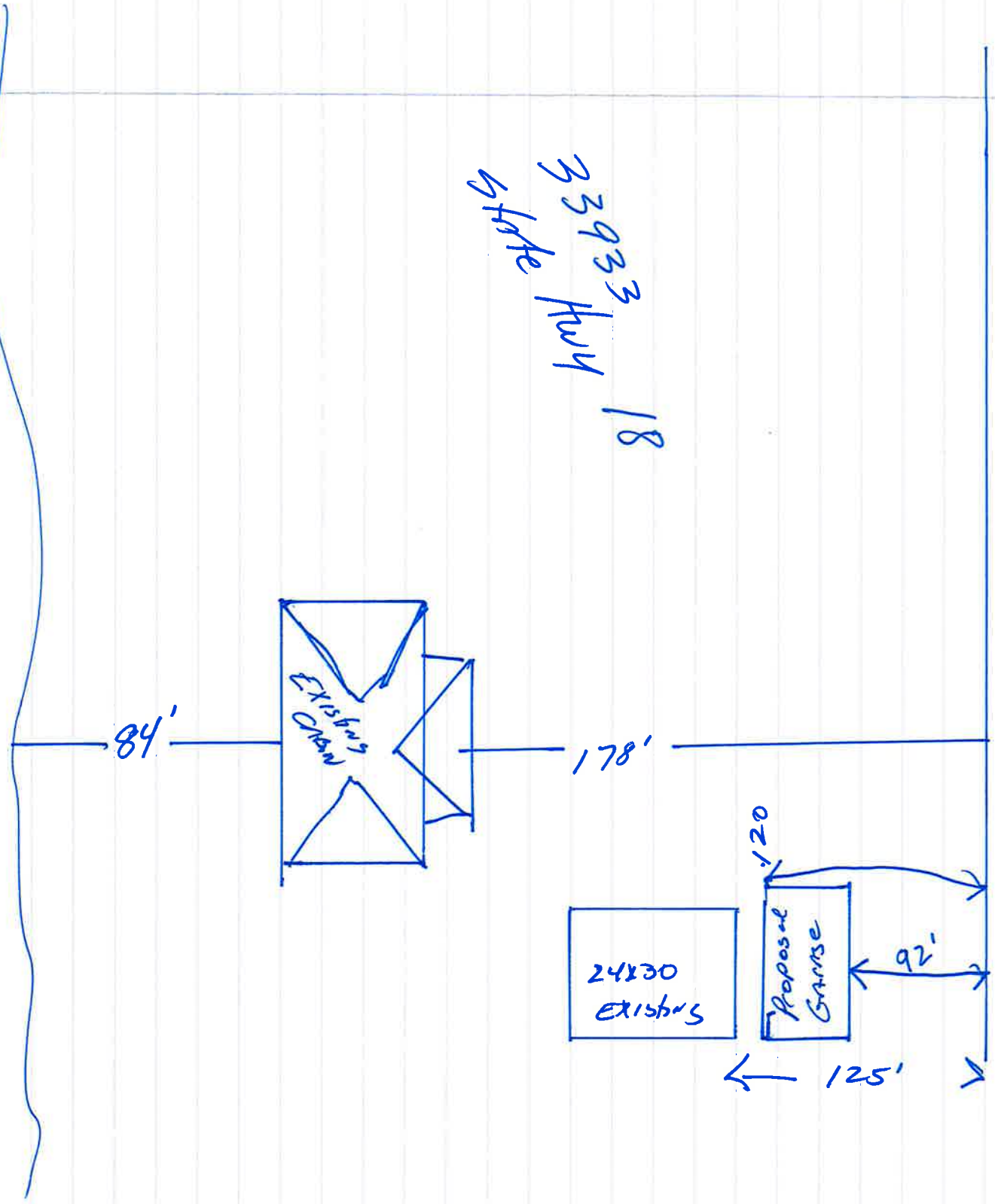


State Hwy 18

33933 Hwy 18
Gate

LMC



Google Maps



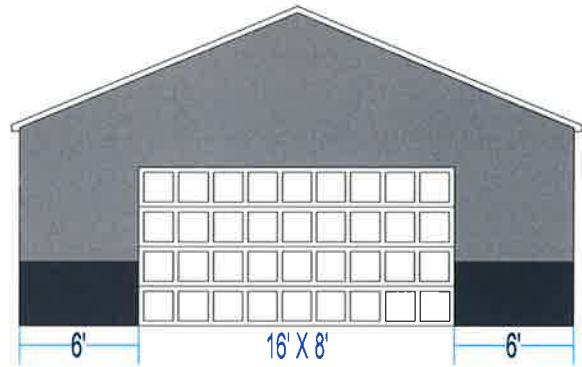
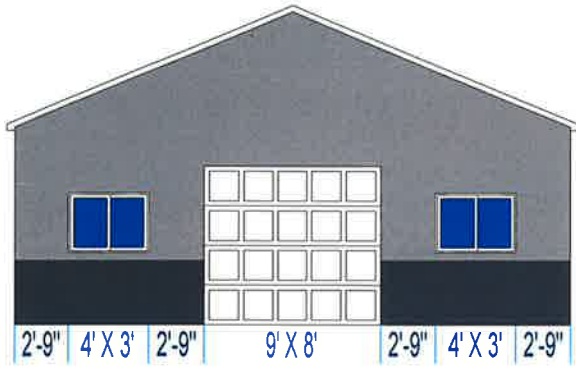
Imagery ©2018 Google, Map data ©2018 Google 50 ft

125'

86'

*** Here are the wall configurations for your design.

Illustration May Not Depict All Options Selected

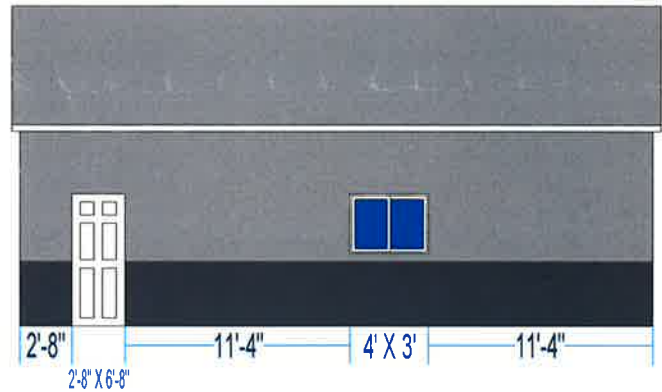
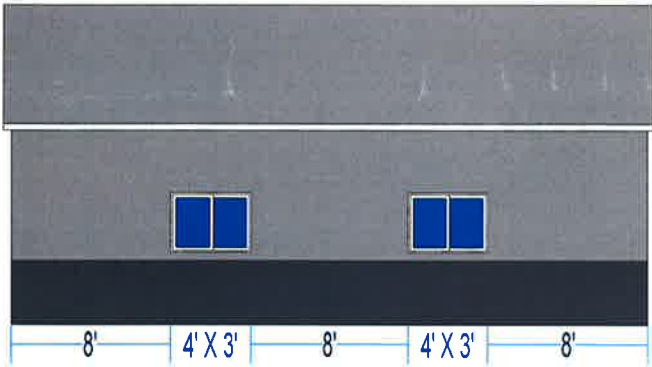


Gable Front View

- (1) - SLIDER (GOOD) 48X36
- (1) - INSULATED GARAGE 9X8 MDP68-W1 EZSET WHITE WINDCODE
- (1) - SLIDER (GOOD) 48X36

Gable Back View

- (1) - GARAGE DOOR WHITE PREM R/P MDP38 16X8 EZSET TORS



Eave Front View

- (2) - SLIDER (GOOD) 48X36

Eave Back View

- (1) - PREHUNGSTE PH32RHSTEE CM-1 6-PANEL STEEL DOOR
- (1) - SLIDER (GOOD) 48X36

Building Size: 28 feet wide X 32 feet long X 10 feet high

Approximate Peak Height: 16 feet 3 inches (195 inches)

NOTE: Overhead doors may need to be "Wind Code Rated" depending on your building location.

Confirm the door requirements with your local zoning official before construction.

Menards-provided material estimates are intended as a general construction aid and have been calculated using typical construction methods. Because of the wide variability in codes and site restrictions, all final plans and material lists must be verified with your local zoning office. Menards is a supplier of construction materials and does not assume liability for design, engineering or the completeness of any material lists provided. Underground electrical, phone and gas lines should be located and marked before your building plans are finalized. Remember to use safety equipment including dust masks and sight and hearing protection during construction to ensure a positive building experience.

Items Selected:

Gable roof w/ 5/12 pitch, Standard Trusses 2' O.C.
Truss Design Location Zip Code: 55044
2x4 Wall Framing Material
28' Wide X 32' Deep X 10' High
Light Gray 40 Year Steel Panel Siding
Brite White Steel Wall Trim
7/16" OSB Wall Sheathing
12" gable/12" eave overhangs
7/16" OSB Roof Sheathing
40 Year Exposed Fastener Panel Roofing
- Light Gray
Brite White Steel Roof Trim
Colored roof screws installed on rib
Economy Vented Closure Strip
Brite White Steel Soffit & Fascia
Brite White Steel Roof Edge
Steel Overhead Door Jamb
Colored wall screws installed in flat

Options Selected:

The options you have selected are:
- 40" Wainscot
=> Eave: 40 Year Steel Panel, Charcoal Gray
=> Eave: 40 Year Steel Panel, Charcoal Gray
=> Gable: 40 Year Steel Panel, Charcoal Gray
=> Gable: 40 Year Steel Panel, Charcoal Gray
5 - 48x36 Window - White Vinyl Slider
1 - 9x8 Overhead Door - MDP68-W1 EZ Set
1 - 16x8 Overhead Door - Premium RP MDP38 EZ Set
1 - 32x80 Service Door - CM1 6-Panel Steel RS

Front View



Back View



Estimated price: \$11,468.25*

*Today's estimated price, future pricing may go up or down.

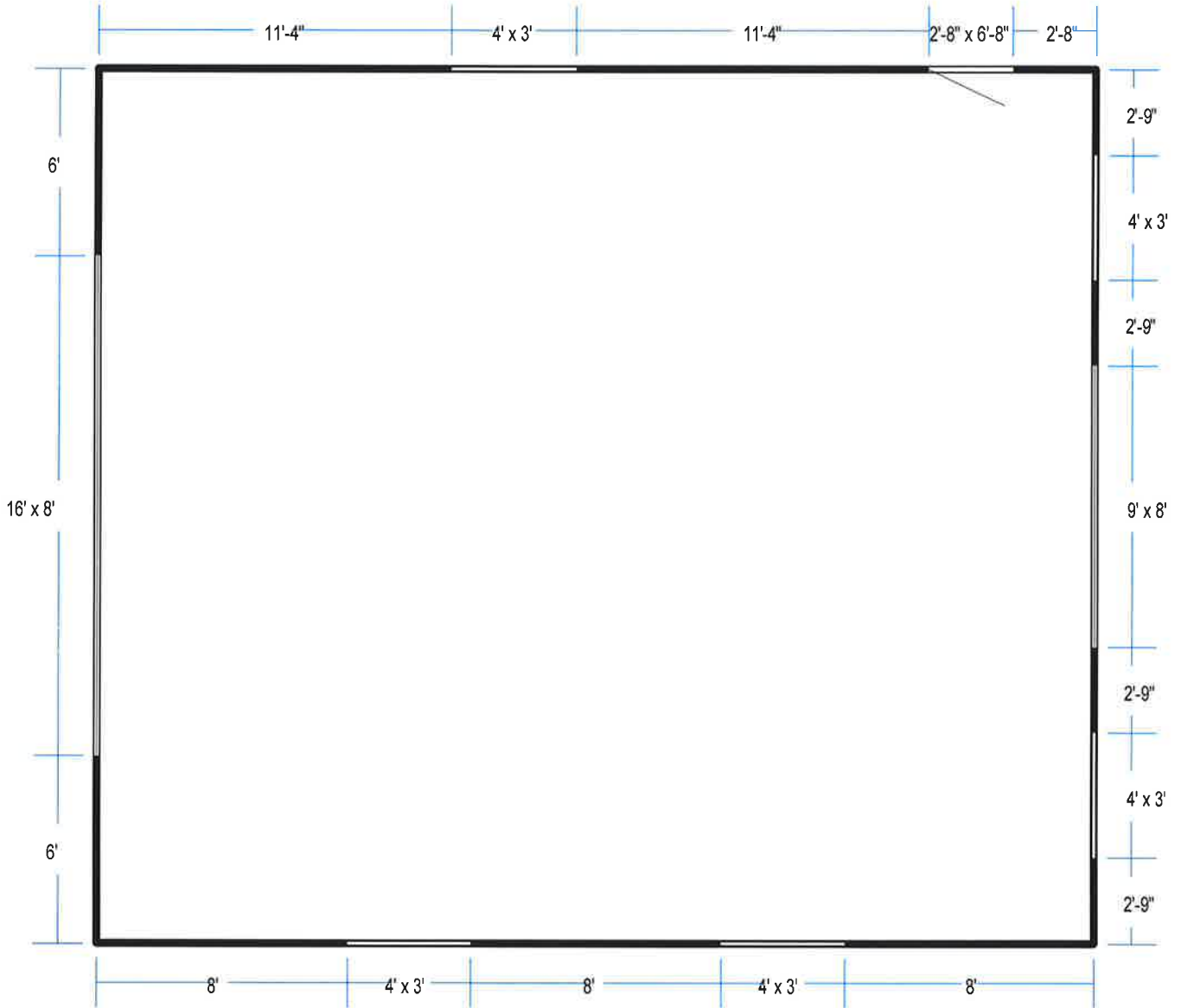
*Tax, labor, and delivery not included.

***** Take this sheet to the Building Materials counter to purchase your materials. *****

Floor type (concrete, dirt, gravel) is NOT included in estimated price. The floor type is used in the calculation of materials needed. Labor, foundation, steel beams, paint, electrical, heating, plumbing, and delivery are also NOT included in estimated price. This is an estimate. It is only for general price information. This is not an offer and there can be no legally binding contract between the parties based on this estimate. The prices stated herein are subject to change depending upon the market conditions. The prices stated on this estimate are not firm for any time period unless specifically written otherwise on this form. The availability of materials is subject to inventory conditions. MENARDS IS NOT RESPONSIBLE FOR ANY LOSS INCURRED BY THE GUEST WHO RELIES ON PRICES SET FORTH HEREIN OR ON THE AVAILABILITY OF ANY MATERIALS STATED HEREIN. All information on this form, other than price, has been provided by the guest and Menards is not responsible for any errors in the information on this estimate, including but not limited to quantity, dimension and quality. Please examine this estimate carefully. MENARDS MAKES NO REPRESENTATIONS, ORAL, WRITTEN OR OTHERWISE THAT THE MATERIALS LISTED ARE SUITABLE FOR ANY PURPOSE BEING CONSIDERED BY THE GUEST. BECAUSE OF THE WIDE VARIATIONS IN CODES, THERE ARE NO REPRESENTATIONS THAT THE MATERIALS LISTED HEREIN MEET YOUR CODE REQUIREMENTS. THE PLANS AND/OR DESIGNS PROVIDED ARE NOT ENGINEERED. LOCAL CODE OR ZONING REGULATIONS MAY REQUIRE SUCH STRUCTURES TO BE PROFESSIONALLY ENGINEERED AND CERTIFIED PRIOR TO CONSTRUCTION.

*** Floor Plan.

Illustration May Not Depict All Options Selected



Building Size: 28 feet wide X 32 feet long X 10 feet high

Note: Wall construction is 2x4 @ 16" on center