

* 1500 sq ft residence
 408 sq ft screen porch
 three-season

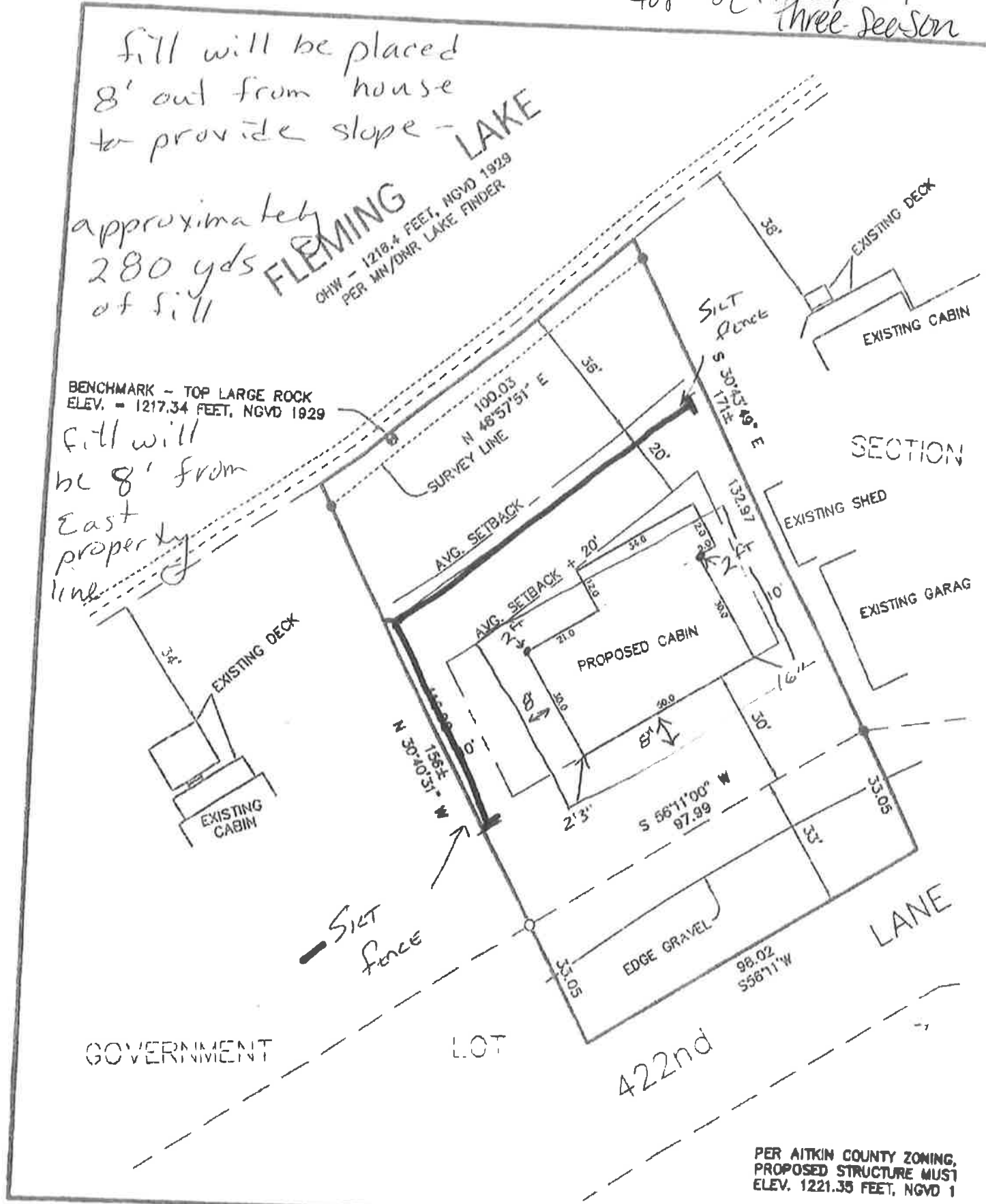
fill will be placed
 8' out from house
 to provide slope -

approximately
 280 yds
 of fill

FLEMING LAKE
 OHW - 1218.4 FEET, NGVD 1929
 PER MN/DNR LAKE FINDER

BENCHMARK - TOP LARGE ROCK
 ELEV. = 1217.34 FEET, NGVD 1929

fill will
 be 8' from
 East
 property
 line



PER AITKIN COUNTY ZONING,
 PROPOSED STRUCTURE MUST
 ELEV. 1221.35 FEET, NGVD 1

ON BUILDING CORNER STAKES
 1 PUT MARKING FOR TOP
 OF SLAB & TOP OF SAND.